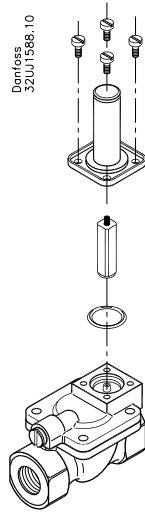
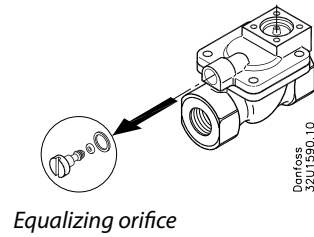


032R9207

Step 1:
Disassemble 4 screws on armature tube - Clean for impurities.

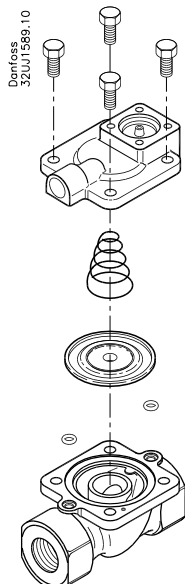


Step 2:
Disassemble equalizing orifice - Clean for impurities.



032R9207

Step 3:
Disassemble 4 screws on cover- Clean for impurities.



Step 4:
Replace possible defect parts.

Step 5:
Assemble the solenoid valve again.

